

# Mithlux S2 Pulse

## User Manual

Hand-held IPL device

Version: V1.0  
Effective date: 2022/3/21

### Table of Contents

1. Safety Information	1
2. Warnings and precautions	1
3. Product information	3
3.1 Indications for use	3
3.2 Packing list	3
3.3 Product structure	4
3.4 Technical parameters	5
4. Application range	6
5. How to use	7
5.1 Inspection before use	7
5.2 Preparation before use	7
5.3 Patch Test	7
5.4 Instructions for use	7
5.5 After-Use Skincare	9
5.6 Frequency of Use	9
6. Maintenance and Cleaning	10
7. Disposal	10
8. Troubleshooting	10
9. Warranty	11
10. EMC	11
11. Symbol	12
12. Contact information	13
13. Special Notes	13
Appendix 1: EMC information	14

### 1. Safety: Who should not use

- Not for individuals under 18.
- Pregnant or breastfeeding users: do not use.
- Do not use if you have a photosensitive condition or are taking photosensitizing medicines (e.g., certain acne or antibiotic medicines).
- Do not use on open wounds, active infections, cold sores, or sunburned skin.
- Do not use on mucous membranes or very sensitive areas.
- Do not use if you have a history of skin cancer or suspicious lesions—seek professional advice first.
- If you are unsure whether you are photosensitive, do not use.

### Where & how not to use

- Avoid use after chemical hair removal/peels until skin is fully normal.
- Do not combine with strong acids/exfoliants (AHA/BHA/retinoids) on the same day.
- Do not use with essential oils or thick creams on the treated area.
- Patch-test on a small area and wait 48 hours before first full use.
- Start on Low; increase only if comfortable. Stop if you notice blistering, severe redness, or unusual discomfort.
- For cosmetic use only. If you experience any adverse reaction, stop using immediately.

### 2. Warnings and Precautions

- Read and follow this User Manual before use. Improper use may cause eye injury or skin irritation. Do not look directly at the flash or use near the eyes. (Wear the provided protective eyewear during use.)
- If the device or power cord is damaged, stop using it immediately. Do not open, repair, or modify the device to avoid the risk of electric shock.
- Do not insert objects into any openings. Keep the device and its power adapter dry and a way from water or high-humidity environments.

- Do not use near the eyes. Do not look directly at the flash. Wear protective eyewear when treating areas close to the eyes.
- For hard-to-reach areas (e.g., back), ask another adult to assist.
- Shave the area first. Hair should be 0 – 1 mm; long hair may cause heat and discomfort.
- Before each session, make sure the skin is clean, dry and oil-free.
- Keep the device out of reach of children.
- Start on Low and increase gradually by body area according to comfort.
- Do not overlap flashes on the same spot; excessive passes may cause irritation.
- This product is not a medical device and is not intended to diagnose or treat any disease. If you have a skin condition or concerns, consult a professional.
- Do not use on areas with recent cosmetic procedures or injections/fillers until fully healed and cleared by a professional.
- Keep dry. Do not use near water (bathtub, basin, shower) or in high-humidity environments.
- Users with reduced physical, sensory or mental capabilities should use this product only under supervision.
- Do not use on mucous membranes or very sensitive areas, including inside the mouth or nose, pubic/genital or anal area, nipples, inside the navel, ears, around the eyebrows or eyes, over large varicose veins, tattoos, or very dark moles. Not recommended for men's beards or the Adam's apple.
- After underarm treatment, avoid deodorant/antiperspirant, fragrance, or acids for 24 hours.
- Clean the treatment window regularly to keep the device in good working order.
- Do not block the air vents.
- Do not flash onto clothing or flammable objects.
- Do not use on or near pets.
- Use in a well-lit room to reduce perceived brightness from the flash.
- Do not drop, hit or shake the device.
- After each use, unplug and allow to cool, then wipe the treatment window and body clean and dry.

- Mild warmth or temporary redness after use can be normal. Apply a cool compress and reduce the level next time. Stop use and seek advice if it persists or worsens.
- Do not leave the device unattended. Turn off and unplug after each use.
- If the device is moved between hot and cold environments, let it reach room temperature for ~20 minutes before use.
- Keep away from flammable or explosive atmospheres and aerosols (e.g., spray booths, petrol stations).
- Operate indoors in a dry, well-ventilated place, ambient temperature 5 – 35 °C (41 – 95 °F).
- For treated skin, avoid direct sun/tanning for 48 hours and use broad-spectrum SPF 30+ when exposed.
- Protect the device from heat and direct sunlight. Do not leave it in hot cars or near heaters.
- If the fan does not run or you notice unusual noise, smell, or excessive heat, stop use and unplug.
- Use only the supplied power adapter. Do not use third-party adapters.
- Check the power cable before use. If damaged, stop using and have it replaced by qualified personnel.
- Do not disassemble, replace the lamp, or modify the device. Dispose of the product according to local e-waste regulations.
- Limit session time. After 30 minutes of continuous use, turn off and allow 10 minutes to cool. Do not cover or block air vents.
- Cleaning: Power off, unplug, and let cool. Wipe the treatment window and housing with a soft dry or slightly damp cloth. Do not use solvents or abrasive cleaners. Ensure all parts are completely dry before the next use.

### 3. Product information

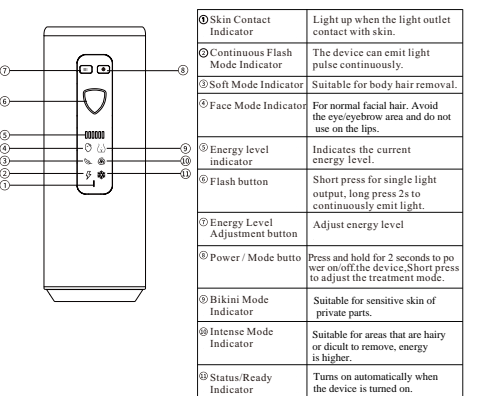
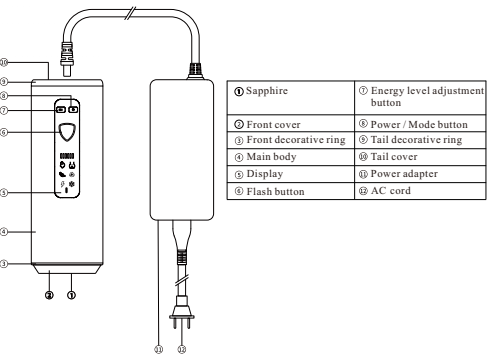
This product is small in size, large in energy, fast in light output speed and good in cooling effect. The cooling area covers the skin area of treatment which can reduce the burning sensation after treatment and improve the user's skin comfort during treatment to give user with better experience.

#### 3.1 Indications for use

IPL Hair Removal Device is an over-the-counter device intended for removal of unwanted body and/or facial hair.

#### 3.2 Packing list

Upon opening the product package, you will find the following contents inside:  
IPL Hair Removal Device x1  
Power Adapter x1  
Power Cable x1  
Goggles x1  
Razor x1



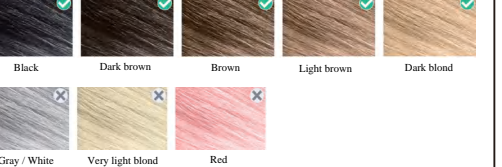
3.4 Technical parameters	
Basic specifications	
Product name	Hand-held IPL Device (Hair Removal Device)
Model	JR5-W
Dimension	158.6*58*39mm
Weight	256g
Type of Protection	BF Type, Class II
Software version	V1.0
Risk group classification	Exempt Group
Output specifications	
Type of light	Intense Pulsed Light (IPL)
Pulse output mode	Single pulse
Wavelength	590-1200 nm
Pulse duration	8.2±2ms
Continuous exposure interval	0.5s-3.0s
Spot Size	3.5 cm <sup>2</sup>
Treatment level	Six levels
Energy density (±20%)	1.83J-5.14 J/cm <sup>2</sup>
Output energy (±20%)	Face Mode: 6.4J-11.5 J Bikini Mode: 6.4J-12 J Soft Mode: 6.4J-13.5 J Intense Mode: 7.4J-18 J
Powerspecifications	
Power supply	Supplied by external power adapter Input: 100-240V, 50/60Hz, 1.5A Output: 24V, 2.5A
Power	60W
Expected service life	
Product life: 5 years	Service life of lamp tube: More than 350,000 counts
Operating conditions	
Operating temperature: 5°C-35°C	Humidity: 15%-75%
Storage and transportation conditions	
Temperature: -20°C-55°C	Humidity: 10%-90%
Barometric pressure: 80kPa-106kPa	

### 4. Application range



#### Skin tone guidance

Use this device only if your skin tone matches the swatch (very light to deep brown). Do not use if it matches the swatch (very dark / black).  
Compare the inside of your forearm with the swatches in natural daylight. Choose your untanned tone.  
If you are tanned (sun, tanning beds, self-tanners), wait until your natural tone returns before use.  
Patch test each new area: one flash on Low (L1), then wait 48 hours. Proceed only if comfortable and no unusual reaction.  
Start on Low and increase gradually by area; avoid overlapping flashes.  
Do not use on tattoos, very dark moles, or near the eyes/eyebrows.  
If redness/warmth lasts >24-48 h, stop use and lower the level next time.



#### Hair color guidance

Compatible (most effective): dark blond/black (dark blond, light brown, brown, dark brown, black). Not recommended (little to no response): gray / white, very light blond, red. Why: IPL works with melanin in the hair root. Colors with little or no melanin (gray / white, very light blond, red) usually do not respond.

### Notes

- Shave before use. Do not wax or pluck.
- Hair color and skin tone may affect results. Results and comfort may vary.
- Use on facial areas with extra caution. Avoid areas where hair is very dense, and stop if irritation occurs.
- How to use
- 5.1 Inspection before use
- 1) Unpack the device and accessories. Check that all items are included and keep the packaging for future storage or transport.
- 2) Inspect the device and adapter for damage. Do not use the device if any damage is found. Contact customer support for assistance.

#### 5.2 Preparation before use

- Use the skin tone chart to confirm suitability (see Section 4).
- Shave the treatment area and gently pat the skin completely dry. Do not use the device on broken or irritated skin. To reduce the risk of irritation, avoid dry shaving.
- Check the light outlet window. If needed, clean it following the cleaning instructions in this manual before use.

#### 5.3 Patch Test

Before first use (or if your skin has been recently exposed to strong sun), perform a patch test on each area to check comfort and select an appropriate energy level.

- Choose a small area you plan to treat.
- Start at Level 1. Place the light outlet window flat against the skin and press the flash button.
- Move to a nearby spot and repeat.
- If comfortable, increase the level gradually over time to find the level that feels suitable for your skin.

appropriate energy level according to your skin conditions.

If you feel strong discomfort, stop immediately and use a lower level next time.

If unexpected skin irritation occurs, stop using the device and allow the skin to recover before using again.

#### 5.4 Instructions for use

- Connect the device to a power supply and the skin contact indicator will flash. Long press the

power/mode button for 2 seconds to switch the device on, and the cooling function indicator will keep lighting during the hair removal. The default treatment mode is Intense Mode, and the default energy level is level 1.



2) Short press the power/mode button to select a treatment mode as needed.



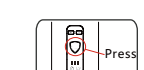
3) Press the energy level adjustment button to choose an energy level. Level 1 is recommended for first-timers.



4) Wear protective goggles before treatment.



5) Point the light outlet at the target skin area closely and vertically till the skin contact indicator lights up. Press the Flash Button to remove hair. Every time press the flash button, the device will emit a flash. At the same time, the treated skin will feel a slight warm and tingling which are normal symptoms. After each flash, move the light outlet to the next position in turn until the whole hair removal area is operated.



6) Long press the Flash button for 2 seconds to enter the continuous flash mode. Under the continuous flash mode, the continuous flash indicator will light up and the device will emit light pulse continuously at a certain interval without need to press flash button. Under continuous flash mode, short press the power/mode button to exit.

Note:  
If the light outlet is not contact with the skin in 30s, the continuous flash mode will automatically exit.  
The auto-flash mode only controls the device to automatically emit light pulse at a certain interval without the need to press the flash button all the time. Switch to the auto-flash mode will not change the technical parameters.

Cleaning  
After hair removal is completed, long press the power/mode button for 2s to turn off the device.  
Note:  
Regardless of whichever mode it has been set to, the device will be switched off automatically if there's no operation in 3 minutes.  
After working for 30 minutes, the device will be forced to shut down automatically.  
After the device is switched off, its fan will keep running for 20 extra seconds for heat dissipation. Don't unplug the power supply during the delayed working period of the fan to avoid device damage.

5.5 After-Use Skincare  
1) The target skin area should not get wet within 6 hours after hair removal. Thereafter, you can apply some moisturizer onto the target skin area for moisturizing purpose.  
2) Do not apply any perfume, facial mask, and cosmetics, which contain exfoliating particles onto the target skin area.  
3) Do not expose the target skin area to intensive ultraviolet radiation within 48 hours after hair removal. If necessary to do so, be sure to apply a due amount of sunscreen cream for protection.  
4) Do not expose the target skin area to any artificial tanning during the hair removal treatment.  
5) Please consult a doctor for advice where it is necessary to conduct any plastic surgery on the target skin area after hair removal.  
6) Please consult a doctor for advice if you feel uncomfortable in the target skin area.

5.6 Frequency of Use		
Times	Weeks 1-4	Weeks 5-8
Frequency	2-3 times per week	1-2 times per week
		Once per month

Note:  
Use this product at an appropriate frequency according to the actual growth of your hair in the target skin area. It is feasible to use this product more often than usual if your hair grows quicker than normal

in which case a higher energy level can be used for hair removal. The frequency of use shall vary from one user to another.

### 6. Maintenance and Cleaning

Maintenance  
In order to achieve the best performance and ensure the longest possible service life, be sure to clean the device before and after every use so as to prevent any hair or dust from accumulating on the device.  
1) Examine the light outlet and components of the device in particular and ensure that all of them remain clean and tidy.  
2) Do not rinse out the product or any accessories with running tap water or inside a dishwasher.  
3) Do not use a steel wire sponge, any abrasive detergents (e.g., toothpaste), or corrosive liquids (e.g., gasoline, engine oil, or acetone) to clean the product.  
Caution: If the light outlet can no longer be cleaned, please stop using the device.

Cleaning  
1) Switch off the device, disconnect it from the power supply and cool it down before cleaning.  
2) Wipe the light outlet and the device surface gently with a clean cloth dipped in clean water.  
Note: If water is not effective for cleaning, you can dip a cotton swab in 70%-75% medicinal alcohol for cleaning, then dry it with a dry, soft cloth. Do not clean with steel wool or corrosive detergent.

7. Disposal  
As this product is a medical device electronic equipment, it should not be disposed of as general household waste at the end of its service life, please dispose this device according to local environmental requirements and do not discard casually.

### 8. Troubleshooting

Problems	Possible reasons	Solutions
Unable to switch on	Power supply is out of service.	Check if the device is properly connected to power.
Unable to emit light	The device head or body gets overheated, or the light outlet fails to get in touch with skin.	Wait for the device to cool down before using it, and then press the light outlet against your skin until the indicator starts blinking.
The indicator is off	Faulty manufacture.	Check if the power supply is in service. Immediately repair or return the device.
Unbearable pains felt during hair removal	The hair on the target skin area is not shaved off.	Shave off the hair on the target skin area before using this product. If the shaving causes any skin allergy, wait for the skin to heal up before using this device in a comfortable energy level.

The energy level is too high.	Reduce the energy level to a comfortable level.
The light outlet is damaged.	Immediately repair or return the product.
Redness in the target skin area after hair removal	Slight redness is normal and harmless to the body, and it will fade out soon. Stop using this product for 48 hours and wait for the symptom to disappear before using it again. Please consult an after-sales specialist for advice as to any questions.
You have chosen an energy level which is too low for you.	Choose a higher level next time.
You may not get the best effect if the areas you treat consecutively are not adjacent, as it would result in large areas being left untreated.	Consecutively emit light on neighboring skin areas that overlap with each other to some extent.
The device is not suitable for some hair colors.	The light expose has no effect on white, gray, blonde or red hair.
The frequency of use is insufficient.	Please follow the recommended cycles of treatment and be patient.
Your response to light exposure is slow.	This product should be used continuously for at least 6 months, as hair regrowth is still suppressed during this period.
The product gets moist and warm during use	Normal situation Nothing needs to be done
Device body overheating automatic shutdown	Over-temperature protection Put the device in a ventilated place for cooling about 20 minutes.

In case of abnormalities or if you are unable to solve a problem, please contact an after-sales customer service specialist. Please keep the original receipt and warranty card for the future maintenance.

### 9. Warranty

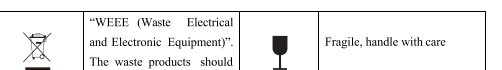
- Warranty of the host: 1 year from the date of purchase.
- Out of one year warranty, if the need to replace accessory parts, maintenance fees will be charged as appropriate.
- Warranty liability:  
If the device is within the warranty period, the company will repair it free of charge after checking for non-human factors. However, device damage caused by improper use or force majeure factors is not covered by the warranty.

### 10. EMC

This device is Class II Medical Device. It complies with Medical Electrical Safety Standards (IEC 60601-1).

- This device is also complied to Medical EMC Standard (IEC 60601-1-2).
- The guidelines and manufacturer's statements are detailed in Annex 1.
- Warning  
Don't use near active HF surgical equipment and the RF shielded room of an ME system for magnetic resonance imaging, where the intensity of EM disturbances is high.  
Use of this equipment adjacent to or stacked with other equipment should be avoided because it could result in improper operation. If such use is necessary, this equipment and the other equipment should be observed to verify that they are operating normally.  
Use of accessories, transducers, and cables other than those specified or provided by the manufacturer of this equipment could result in increased electromagnetic emissions or decreased electromagnetic immunity of this equipment and result in improper operation.  
Portable RF communications equipment (including peripherals such as antenna cables and external antennas) should be used no closer than 12 in (30 cm) to any part of the equipment, including cables specified by the manufacturer. Otherwise, degradation of the performance of this equipment could result.

Symbol	Meaning	Symbol	Meaning
	Warning: OPTICAL RADIATION		Opaque eye protection must be worn
	Refer to instruction manual/booklet		Type BF Applied Part
	Class II equipment		General warning sign
	Manufacturer		Manufacture Date
	Keep dry		Medical device
	Batch Code		Do not roll
	This way up		Stacking limit by number "2"



### 12. Contact information

SHENZHEN JVK MEDICAL INSTRUMENTS CO., LTD.  
Rooms 203 & 303, Building 1, Hetai Industrial Zone, Fuyuan 1st Road, Zhansheng Community, Fuhai Street, Bao'an District, Shenzhen, Guangdong 518103, P.R. China  
Brand & Customer Support (Non-regulatory):  
Mithlux — Hebei Douren E-Commerce Co., Ltd.  
Email: support@mithlux.com  
Website: mithlux.com (Support & Resources)  
Service Address: Baoding, Hebei, China  
Made in China

Regulatory Identification:  
Product name: Hand-held IPL device  
Marketing name: Mithlux S2 Pulse  
Model: JR5-W  
For cosmetic use only.

#### Special Notes

This user manual is supplied with the product.  
Minor adjustments may be made between different production batches as part of continuous product improvement.  
The company is solely responsible for the amendment and interpretation of this User Manual and uses its best endeavors to ensure the correctness and truthfulness of the contents herein contained, which have been checked carefully. To the extent allowed by the applicable law, the company reserves the right of final interpretation of this User Manual in the event it contains any error or omission of printing. In the meantime, the company will reserve the right to modify this User Manual and to improve this product. Certain diagrams in this User Manual are only for illustration and reference purposes. In case of any discrepancy between any of these diagrams and this product in kind, the latter shall prevail.

### Appendix 1: EMC information

Guidance and Manufacturer's Declaration – Electromagnetic Emissions	
Emission test	Compliance
RF emissions CISPR 11	Group 1
RF emissions CISPR 11	Class B
Harmonic emissions IEC 61000-3-2	Class A
Voltage fluctuations/ flicker emissions IEC 61000-3-3	Complies

Guidance and Manufacturer's Declaration – Electromagnetic Immunity		
Immunity Test	IEC 60601-1-2 Testlevel	Compliance level
Electrostatic discharge (ESD) IEC 61000-4-2	±8 kV contact ±2 kV, ±4kV, ±8kV, ±15 kV air	±8 kV contact ±2 kV, ±4kV, ±8kV, ±15
Electrical fast transient/burst IEC 61000-4-4	±2 kV for a.c. power cord	±2 kV for a.c. power cord
Surge IEC 61000-4-5	±0.5kV and ±1kV for a.c. power cord to power cord	±0.5kV and ±1kV for a.c. power cord to power cord
Voltage dips, short interruptions and voltage variations on power supply input lines IEC 61000-4-11	0% U <sub>i</sub> ; 0.5 cycle at 0°, 45°, 90°, 135°, 180°, 225°, 270°, 315° 0% U <sub>i</sub> ; 1 cycle 70% U <sub>i</sub> ; 25/30 cycle 0% U <sub>i</sub> ; 250/300 cycle	0% U <sub>i</sub> ; 0.5 cycle at 0°, 45°, 90°, 135°, 180°, 225°, 270°, 315° 0% U <sub>i</sub> ; 1 cycle 70% U <sub>i</sub> ; 25/30 cycle 0% U <sub>i</sub> ; 250/300 cycle
Power frequency magnetic field IEC 61000-4-8	30 A/m 50Hz/60Hz	30 A/m 50Hz/60Hz
Conducted RF IEC 61000-4-6	3 V r.m.s. 150 kHz to 80 MHz 6 V r.m.s. in the ISM and amateur bands between 0.15 MHz and 80 MHz	3 V r.m.s. 150 kHz to 80 MHz 6 V r.m.s. in the ISM and amateur bands between 0.15 MHz and 80 MHz
Radiated RF	10 V/m	10 V/m

Note\* - As an alternative to FM modulation, 50% pulse modulation at 18 Hz may be used because while it does not represent actual modulation, it would be worst case.  
Note\*\* - The carrier shall be modulated using a 50% duty cycle square wave signal.